



mental health product guide

tailored solutions for all your grab rail and washroom needs.

GRAB RAIL



INDUSTRIES



WASHROOM



ACCESSORIES



CURTAIN TRACKS



AND CURTAINS



SANITARY &



JANITORIAL



COMMERCIAL



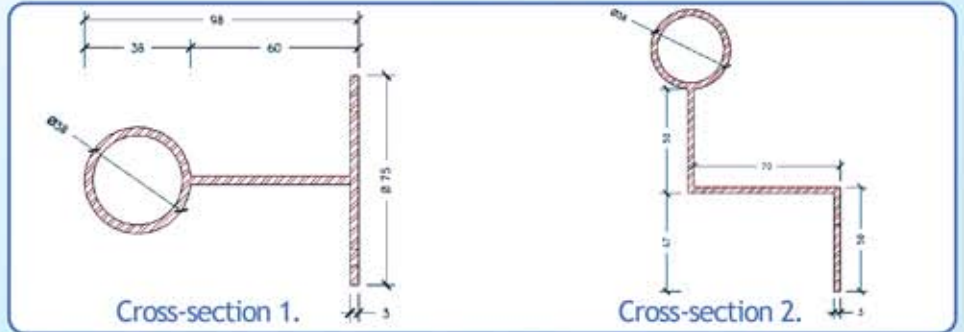
HARDWARE





GRI IN-FILL GRAB RAILS

At GRI we have the resources to meet all your grab rail requirements whether they be simple or complex. We manufacture custom grab rails to suit any application or to fit into any location. We also specialise in security & mental health in-fill grab rails. Several types of in-fills are available depending on your requirements. Use GRI In-fill rails for your project for complete safety.



GRI 343 - PAPER TOWEL DISPENSER

Our GRI Paper Towel Unit is recessed, resulting in an anti-ligature product, ideal for use in Mental Health Institutions

Specifications:

Stainless Steel, Recessed

Dispenses 600 C-fold or 800 multi-fold paper towels

Overall Size: 330mmW x 711mmH x 115mmD

Wall Opening: 292mmW x 673mmH x 108mmD

Suggested mounting height: 1016mm from bottom of unit to finished floor.



GRI 415 - HAND DRYER

Recessed, flat frontage and with no hanging points, our GRI 415 provides the solution for your project. Automated dryer and 2 minute auto shut off for extra protection. 5 Year Warranty.

Specifications:

Stainless steel automatic recessed hands-free hand dryer.

Dimensions: 340mmW x 361mmH x 153mmD

Operating Voltage: 230-240 Vac, 50/60 Hz, 2.0-2.2 Kw

Warm Air Volume Output: 458.5m³/h.

Warm Air Temp Output: 60°C at ambient T=20°C.

Motor Type: 1/4 HP, 4.2 krpm, Brush type, dual ball bearings

Motor Thermal Protection: Auto resetting thermostat turns unit off at 105°C

Heater Element: 2000W @ 240 Vac / 2000W @ 120 Vac

Heater Thermal Protection: Auto resetting thermostat turns unit off at 87°C, Thermal fuse cuts unit off at 141°C.

Drying Time: Less than 15 seconds

Circuit Operation: Infrared automatic, self adjusting

Sensor Range: Adjustable; standard 18cm + / - 2.

Timing Protection: 2 min auto shut off.

Timing Duration: 2 second

delayed turn off after last sensor read.

Cover type: Stainless steel, 2.0mm thick.

Cover Finish: Satin, bright or chromed finish

Net Weight: 9.2 Kg



GRI 464 STAINLESS STEEL MIRROR

Made from durable stainless steel and without a frame, you can't go wrong. Perfect for use in institutions where anti-ligature products are required. Can be made to any size.

Specifications:

Available backed or unbacked.

Acrylic mirror also available.

Size: 300mm x 450mm or as required

GRI 464: 300mm x 450mm

GRI 465: 450mm x 575mm

GRI 466: 575mm x 575mm



GRI 505 SOAP DISH

The answer to your soap dish question. Our recessed GRI 505 soap dish has no lip on the front. Tailored especially for your mental health needs.

Specifications:

Stainless Steel.

Size: 115mmW x 115mmH x 62mmD



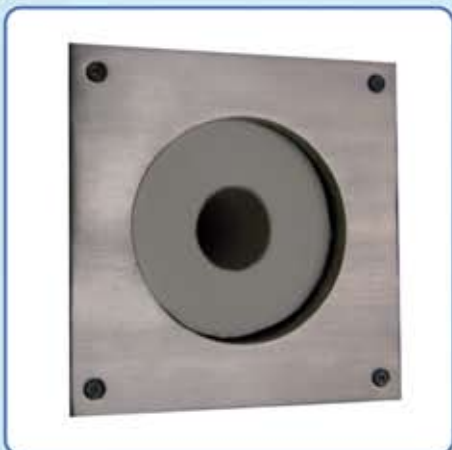
GRI 620 SHAMPOO SHELF

Recessed Shampoo and general use shelf. Anti-ligature Finish. Can be made to any size.

Specifications:

Heavy Duty. Fabricated of type 304 16 gauge stainless steel.

Size: 350mmW x 350mmH x 90mmD



GRI 914 TOILET PAPER HOLDER

GRI has designed & developed a well proven anti-ligature Toilet paper holder, recessed into the wall. Satisfies your mental health requirement need.

Specifications:

Fabricated of 14 gauge type 304 satin stainless steel. 115mm interior depth accommodates on standard toilet paper roll. Flange is 180mm square. Two "T" nuts welded on back for rear mounting. Available with round flange.

Wall Opening: 140mm dia x wall thickness

Overall Size: 180mm x 180mm



KESTREL MAGNETIC CURTAIN TRACK

Mental Health facilities require a safe solution for patients who are at risk of self harm or suicide. This is where GRI can provide a solution for your Curtain and Curtain Track System needs.

The Magnetic Curtain Track System suspends curtain tracking from walls or ceilings by way of specially designed brackets that divide once an excess load is applied which prevents self harm to patients.

This new extraordinary design surpasses traditional solutions which were adapted through ensuring tracks are directly fixed to ceilings or using other ad hoc methods. After a range of incidents and the associated consequences, there became a vital need for a fail safe system that not only ensured the safety of the patients, but also prevents damage to facility walls and ceilings.

The Kestrel Magnetic track is one fail-safe solution, already used in many hospitals and mental health institutes across Australia. Our systems deliver, being designed from the highest quality components, they provide years of trouble free service.

Call 1300 138 625 for further information or to request a flyer on this product.



GRI 571 COLLAPSIBLE HOOK

Ideal for use in mental health institutions, this collapsible hook's tension can be adjusted to suit your needs.

Specification:

Bracket is fabricated of type 304 #11 gauge stainless steel. Hook is fabricated of type 304 #7 gauge stainless steel. Friction washers and tamper resistant spanner screw. Adjust the amount of the tension required for hook to collapse.

Size: 25mmW x 110mmH x 76mmD



GRI 573 COLLAPSIBLE HOOK

Safety hook designed to snap down with excess load.

Specifications:

Fabricated of 12 gauge stainless steel type 304 with a #4 satin finish. Back plate is 14 gauge stainless steel. If hook is excessively loaded, it will snap down for safety. Unit has four holes for front mounting.

Size: 108mmW x 108mmH x 54mmD



In-Fill Grab Rails
Paper Towel Dispensers
Hand Dryers
Mirrors
Soap Dishes
Soap Dispensers
Shampoo Shelves
Toilet Paper Holders
Curtain Tracks

Call us today to discuss Mental Health Product needs
from this flyer or any other product requirements.

Assistance with product specification available.



PO Box 557, 50 Robinson St, Goulburn NSW 2580

PO Box 5107, 9A Pembury Rd, Minto DC NSW 2566

Phone: 1300 138 625

Fax: (02) 4824 1020

Email: sales@griproducts.com.au

Web: www.griproducts.com.au